

TREASURES

FLEA MARKET

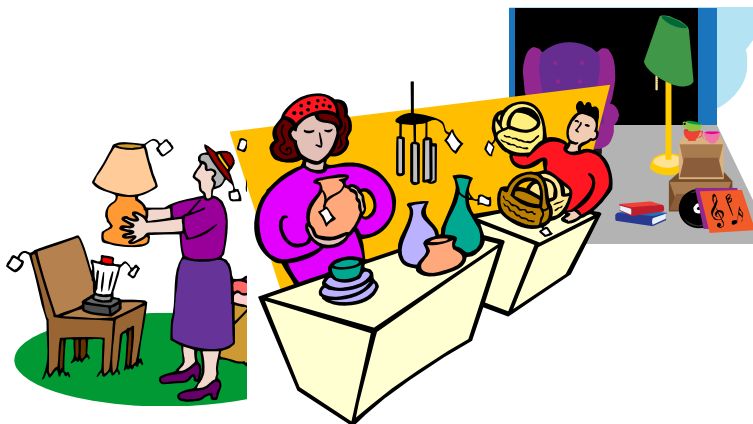
THANK YOU for helping the Parish in its fundraising goal. Your donation of items for the Treasures flea market is MUCH APPRECIATED!! Enclosed in this packet are the following:

1. Suggested pricing guidelines
2. Pricing stickers on which you write the price for your items
3. Tax Deduction Receipt

Please note that we *will not be able to accept* the following items: Books, clothing, shoes, upholstered furniture, bedding, or stuffed animals. Small appliances or electronic items must be in working condition and will be tested during drop off. You will need to bring your already priced items to the church parking lot on Friday, September 30, between 4:00pm and 8:00pm. You can enter from Melrose Drive (northbound) or from Cannon Road, and there will be volunteers who will direct you to the proper unloading spot. PLEASE STAY IN YOUR CAR during drop off. We have very limited resources to pick up or store flea market items before the drop off date. Call John Murphy if you need to make special arrangements, but our ability to help is limited.

You are also welcome to assist at the sale. If you have not already done so, please contact John or Wendy Murphy at 760-497-6117 or wmurphy8801@aol.com to sign up for one of the many tasks that will need to be done Thursday and Friday as well as on the day of the sale.

Don't forget to come back to the sale as a shopper—you won't want to miss all the treasures donated by other Parish members and the many plants from our Plant Booth. The sale is cash and carry and runs from 7:30am to 12:30pm on Saturday, October 14.





\$\$ Pricing Guidelines \$\$

TREASURES FLEA MARKET

Listed below are some items that you may wish to donate to the Treasures sale and suggested prices. Prices are only guidelines. You may price your items differently depending on condition. If the items you wish to donate are not listed below you can determine your own price. Try to keep your prices rounded to the nearest dollar (\$3, \$5, \$10 etc.).

Please note that we **will not be able to accept** the following items: Books, clothing, shoes, upholstered furniture, bedding, or stuffed animals. We are limited as to how much we can pick up or store—you will need to bring your items to the church parking lot between 4:00pm and 8:00pm on Friday, October 13. If you need help call John or Wendy Murphy at 760-497-6117.

HOUSEHOLD ITEMS

Glassware - Don't Price
Mixing bowls - \$3-\$5
Baking dishes - \$5-\$7
Cooking utensils - \$2-\$4
Pots and pans - \$5-\$10
Vases - \$2-\$7
Picture frames - \$3-\$7
Decorative accessories, candles, baskets - \$3-\$10
Two drawer file cabinet - \$8-\$15
Trays, serving platters - \$2-\$10
Flatware - \$3-\$5
Small Rugs - \$20-\$40

FURNITURE

Mirror - \$5-\$10
Bookcase - \$10-\$15
Wooden chair - \$7-\$15
Lawn chair - \$4-\$8
Coffee table or end table - \$10-\$20
Wall clock - \$5-\$10
Desk - \$10-\$20
Table lamp - \$7-\$15
Floor lamp - \$9-\$20
TV stand - \$5-\$10
Framed picture - \$6-\$20

TOOLS

Hand tools - \$3-\$12
Garden/Lawn tools - \$6-\$12
Power tools - \$25-\$40

ELECTRONICS

***good working order;
tape all pieces together***
Televisions - \$10-\$50
Radios - \$20-\$35
Alarm Clocks- \$5-\$15
DVD Players - \$20-\$35
Digital Cameras - \$10-\$50
Computer Monitors - \$10-\$25
Play Station, etc. - \$20-\$50

MEDIA

CD's/DVD's - Don't Price
Video Games – Don't Price

JEWELRY

Earrings - Don't Price
Rings/ Bracelets - Don't Price
Necklaces - Don't Price
Pins - Don't Price

SMALL APPLIANCES

***good working order;
tape all pieces together***
Hair dryer - \$5-\$15
Bread maker - \$10-\$20
Hand mixer - \$5-\$8
Stand mixer - \$10-\$20
Coffee maker/tea maker - \$7-\$12
Food processor - \$15-\$30

SPORTS EQUIPMENT

Golf clubs- \$3-\$15
Golf bag - \$15-\$30
Tennis racket - \$10-\$15
Bicycle - \$20-\$35
Roller blades - \$7-\$12
Exercise equipment - \$10-\$40
Skis (water and snow) - \$10-\$15
Wagons - \$8-\$12
Backpacks - \$10-\$15
Fishing equipment - \$6-\$15
Skate boards - \$6-\$10

TOYS

Jigsaw puzzles (tape boxes) - \$2-\$5
Baby/Toddler toys - \$2-\$5
Trucks/Dolls, etc. - \$3-\$8
Board games (tape boxes) - \$2-\$5

MISCELLANEOUS

Luggage - \$8-\$15
Brief case - \$5-\$8
Christmas ornaments - \$2-\$7
Wrapping paper or rolls - \$2-\$5
Greeting cards - \$1 each
Silk plants - \$3-\$7
Adding machine - \$5

TREASURES

ITEM DONATION RECEIPT

Thank you for your donation to St. Thomas More Catholic Church's Treasures Flea Market. If you'd like a tax deductible receipt for your donation, the IRS requires that **you** describe and estimate the value of your gifts. You may list these items below and continue on the back if you need extra room. Please bring your receipt with your donation and we will sign it then, or return this completed form in the envelope marked "Treasures Flea Market" to the Parish Office-Box 43 or in the offertory collection basket. John Murphy will sign this receipt for your tax information and you may pick up your signed donation receipt from Box 43 during the month of November.

Name: _____ Phone Number: _____ Date: _____
(Please print)

Description	Estimated Value	Description	Estimated Value

No goods or services were provided in exchange for your donation, except intangible religious benefits. Description of item(s) and estimated value(s) are responsibility of donor in accordance with IRS regulations.

Signed: _____
For St. Thomas More Catholic Church

Tax ID#: 27-3936812

